



Early Warning of Zoonotic Diseases in the One Health Context

The Second Multi-Hazard Early Warning Conference (MHEWC-II)
Side event 5: Health and biological Hazards

Dr Lina Mur

Veterinary epidemiologist
World Organisation for Animal Health (OIE)

Geneva (Switzerland), 14 May 2019

The OIE in brief

- **Intergovernmental organisation** responsible for improving animal health worldwide.
- Recognised as a **reference organisation** by the World Trade Organization (WTO) and in 2019 has a total of **182 Member Countries**.
- The OIE maintains permanent relations with **71 other international and regional organisations** and has **Regional and sub-regional Offices** on every continent.

OIE Global vision

Economic prosperity, social and environmental welfare of populations

2020

Protecting animals



Preserving our future

Delivering timely, high quality information and services to

allow the management of risks to terrestrial and aquatic animal health and welfare

minimise associated dangers to human health

protect the environment and biodiversity in a “One Health” approach

The “One Health” Concept

A global strategy for managing risks at the
Animal - Human - Ecosystems interface



Tripartite agreement of 3 Directors General

3 Priorities



Zoonotic influenzas

⇒ OFFLU, OIE/FAO
expertise network on animal
influenza

Antimicrobial resistance

⇒ The OIE action plan
contributes to the achievement
of certain issues in the WHO
Global Action Plan

Rabies Global control of canine rabies

⇒ WHO-OIE global
conference in
Dec. 2015

Disease reporting system

WAHIS: World Animal Health Information System

- WAHIS provides a **platform** for collection, submission & access all data provided by countries
- An official OIE **disease reporting format** for clear & concise exchange of information
- **Focal points** under the responsibility of the **Delegate**, can submit information to the OIE



WAHIS

ANIMAL DISEASE INFORMATION



ADDITIONAL INFORMATION

Early warning system



Monitoring system

Alert messages for exceptional epidemiological events for 117 OIE-listed diseases and emerging diseases

Information for 117 OIE-listed diseases twice a year

Information from the annual reports

- Veterinary Services capabilities
- Vaccine production
- National laboratories' capabilities
- Animal population figures
- **Human cases for zoonoses**



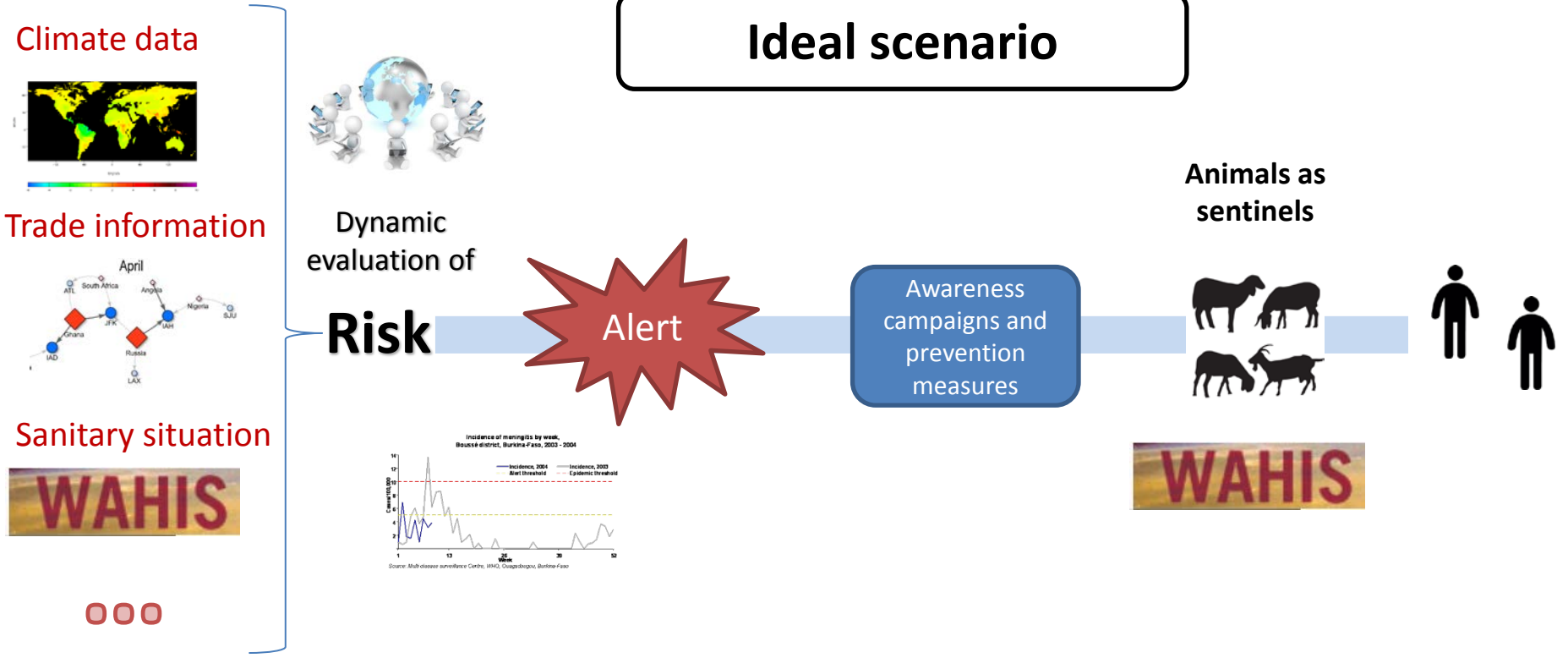
Countries should send an Immediate notification **within 24 hours**, of any of the following events for an **OIE- listed disease**:

first occurrence, recurrence, new strain, change in the distribution or increase in incidence or virulence of, or morbidity or mortality, occurrence in an unusual host species

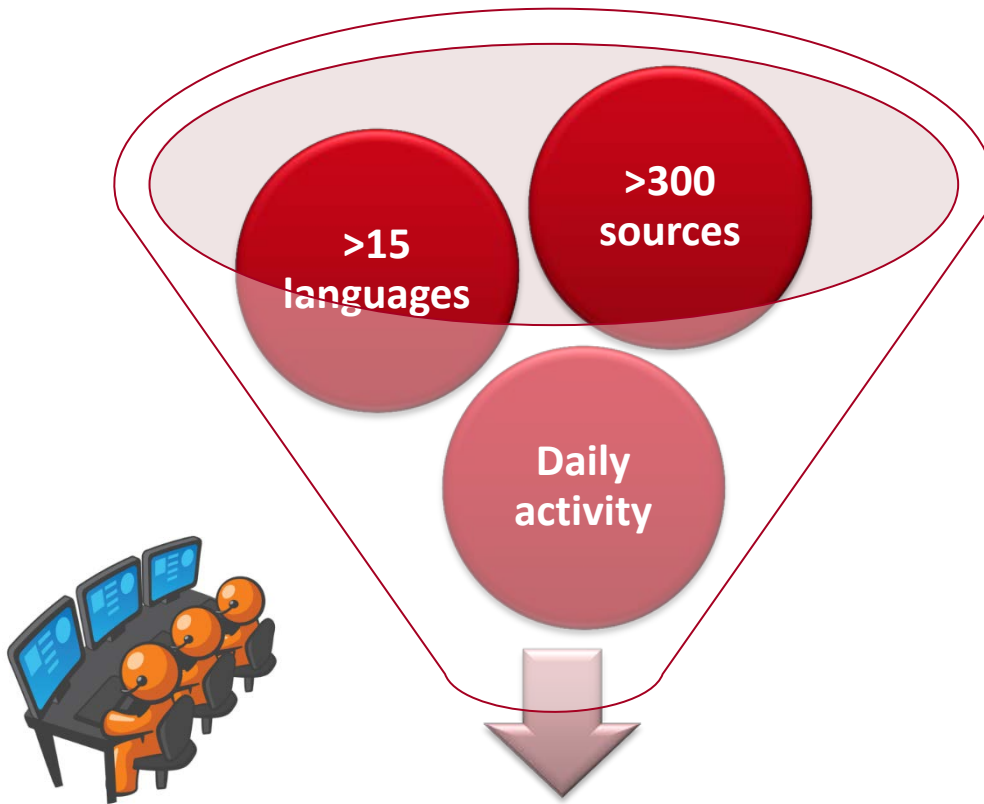
WAHIS: World Animal Health Information System

Examples of OIE-listed diseases with zoonotic character:

- Anthrax
- Brucellosis
- CCHF
- Avian influenza
- Rabies
- RVF
- *Trichinella*
- *Echinococcus*
- WNF
- Q fever
- Leishmaniosis
- Trypanosomosis (tsetse-transmitted)
- BSE
- Bovine tuberculosis
- Nipah virus



A major specificity and reactivity of WAHIS: active search of unofficial information



GLEWS platform
Global Early Warning and Response
System for Major Animal Diseases,
including Zoonoses
TRIPARTITE

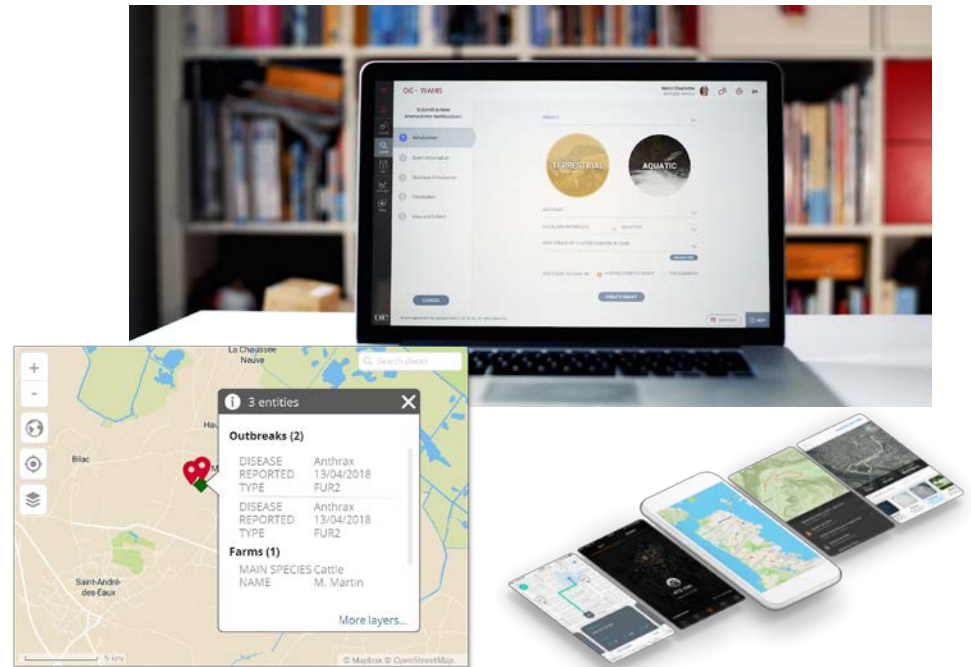
EIOS EPIDEMIC INTELLIGENCE
FROM OPEN SOURCES **WHO**

Source
Intelliriver Source
IBIS (Australia)

**Reference Laboratories
(OIE network)**

WAHIS is becoming OIE-WAHIS

- User friendly, intuitive, time-efficient.
- High resolution dynamic mapping
- Data extraction & analysis
- Interoperability, integration with other data and systems



<http://www.oie.int/animal-health-in-the-world/the-oie-wahis-project/>

Facilitating reporting and the use of data



Improving Early Warning

Thank you for your attention



Dr Lina Mur
l.mur@oie.int

12, rue de Prony, 75017 Paris, France
www.oie.int
media@oie.int - oie@oie.int

