



CPRH

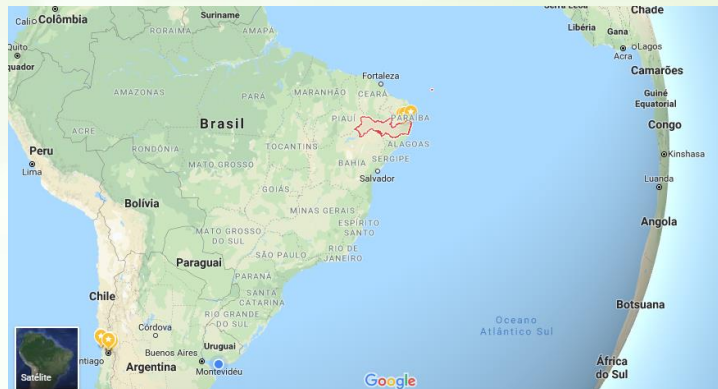
AGÊNCIA ESTADUAL DE MEIO AMBIENTE
PERNAMBUCO - BRASIL



GENERAL INFORMATIONS

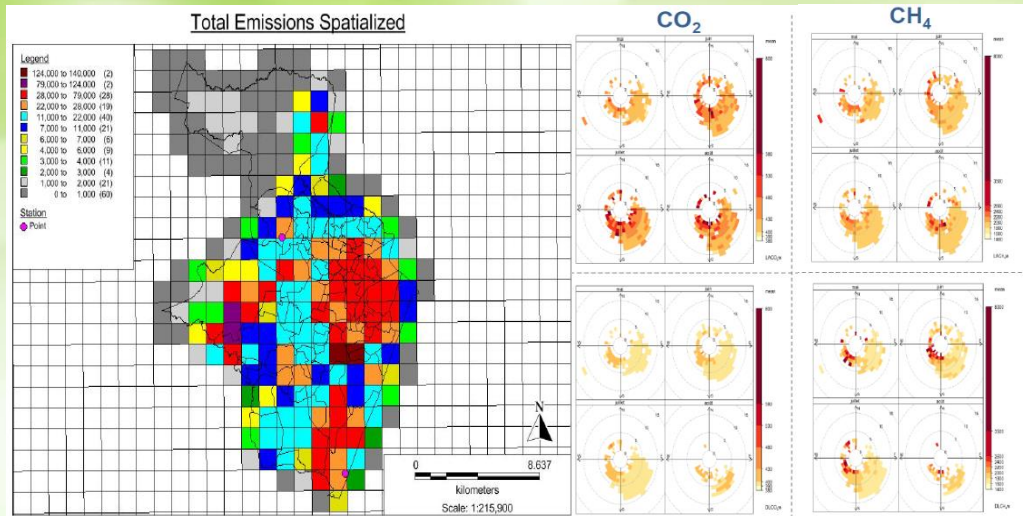


- Environmental Agency of Pernambuco State - Brazil
- Responsible to execute the environmental policy
- 41 years of existence
- Pernambuco population is about 9.2 millions and Recife is about 1.5 million
- Number of cities attended: 166

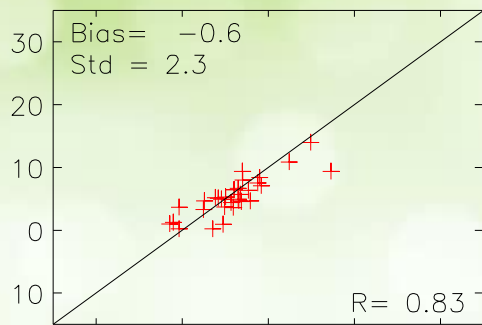
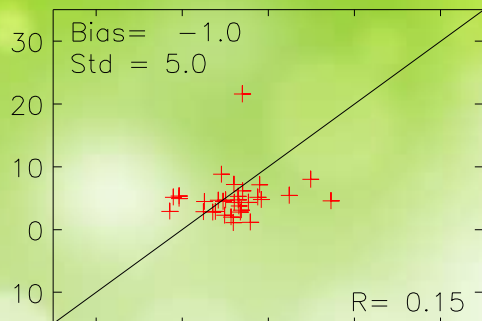


Actual GHG datas

- GHG inventory of capital;
- Reliable data after the improvement by measurement and analysis;
- Main GHG emissions areas identified;
- High CH₄ emissions with uncertainty sources;
- Also have a reliable “Start Point” for planning new policies and actions for NDC goals;



BENEFITS OF THE MEASUREMENT AND IMPROVEMENT

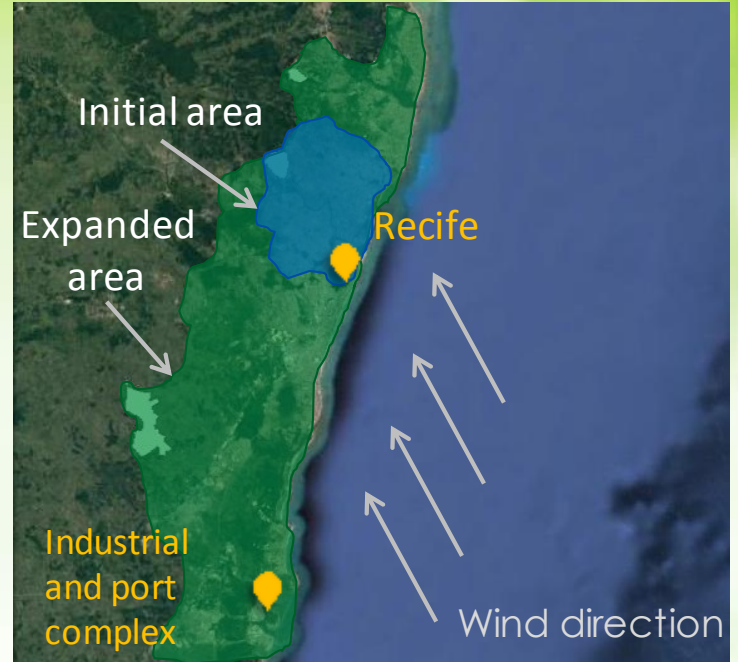


2015/05/15
2015/06/13
Tcor = 7 days
Observations : LA

- Atmospheric measurements revealed large amount of methane, didn't showed in the inventory.
- Fossil CO2 emissions are about 8% higher than estimated by the prior inventory.
- Uncertainty of fossil emissions were reduced from 40% to 20%

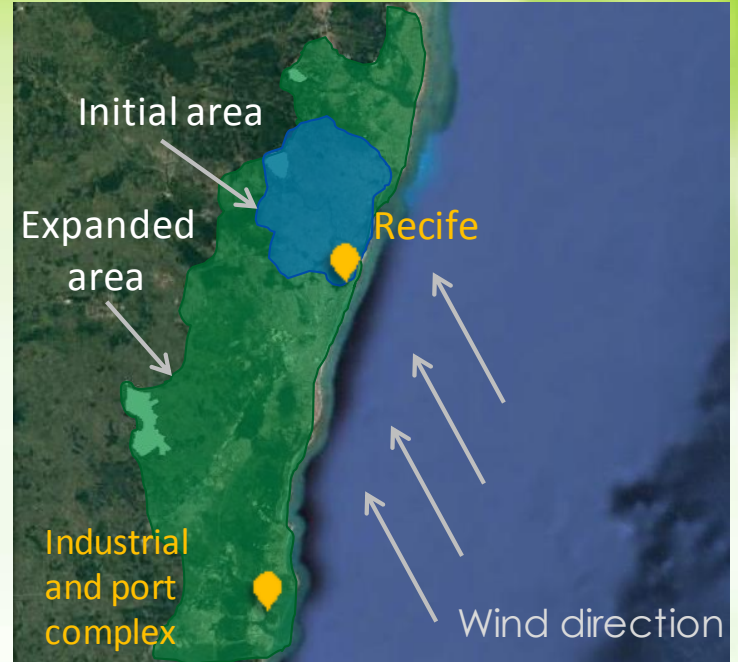
Next Goals and Challenges

- Expand the monitored area (inventoried and measured area) and the time of monitoring;
- Better knowledge about the CH₄ emissions;
- Integrate GHG and the air quality monitoring;
- Continue using the monitoring data to improve both GHG and pollutant inventories at the same time;
- Developing and apply a public policy to reduce the GHG emissions;
- Measure a reliable dimension of the public policy impact applied;



Next Goals and Challenges

- Simulate scenarios of projections based on the results of the policy applied;
- Identify with a better resolution the main emissions sources;
- Analyse the interaction of Air Quality and GHG emission between urban areas and nearby protected areas of biodiversity;
- Promote a better vision and a consistent strategy in the state, to implement actions for the NDC goals;
- Create and establish a law about the GHG emissions reduction and monitoring;



Thank you

Paulo Barros
President Advisor of CPRH

paulo.rbarros@cprh.pe.gov.br